

# Your Fee Sheet

## Busy Bees at Lightwater

Carlton House, 63-65 MacDonald Road,  
Lightwater, Surrey,  
GU18 5XY

Telephone: 01276 453595

## Standard Childcare Fees

Childcare fees and funding can be confusing, but the good news is that Busy Bees are here to help!

Below, you'll find the standard fee sheet for your chosen nursery. These fees apply to families who are not eligible for any government funding and represent the full, non-funded cost of childcare.



### Effective From 1st January 2026

	Start	End	0-2 Year Olds	2-3 Year Olds	3-5 Year Olds
<b>Full Week Monday to Friday</b>	8:00 AM	6:00 PM	£511.50	£498.50	£453.50
<b>Full Day</b>	8:00 AM	6:00 PM	£110.00	£106.00	£97.00
<b>Morning</b>	8:00 AM	1:00 PM	£70.50	£69.00	£65.50
<b>Afternoon</b>	1:00 PM	6:00 PM	£70.50	£69.00	£65.50

Fees will include all meals, drinks and snacks prepared on site by our Nursery Chef. Sibling Discounts also available (Sibling Terms & Conditions apply).

### Early/Late Sessions

	Start	End	0-2 Year Olds	2-3 Year Olds	3-5 Year Olds
<b>Early Session</b>	7:30 AM	8:00 AM	£7.05	£6.90	£6.55

### Additional Information

There is a non-refundable Registration Fee payable to secure your place of £100.

£50 of this fee will be credited to the first invoice issued to you following your child's start date.

Fees are based on 52 weeks per year, paid monthly in advance.

A minimum booking of 2 Full Days per week is required.

Minimum Notice requirements apply, and fees are subject to review in accordance with the [Terms and Conditions](#).

The nursery will be closed on all Bank Holidays (normal charges still apply). No exchanges, credits or refunds will be given for sickness or holidays.

Late Collection fee of £10 for every 15 minutes, or part of, that you are late collecting your child after the end of their agreed session.

We do not provide childcare by the hour.

Any sessions which are outside of the 8:00am - 6:00pm full day are offered on a strictly pre-bookable basis.

## Funded Childcare: Additional Voluntary Charges

It's important to know that government funding is not intended to cover the full cost of childcare. It does not include essential extras like meals, nappies, wipes, sun cream, additional hours, and trips.

If you're eligible for funding, you'll still be responsible for these items.

### Additional Voluntary charges

Description	Meals and Snacks	Consumables
Full Day	£10.50	£1.50
Morning	£6.80	£0.75
Afternoon	£3.70	£0.75

### Additional Funding Information

We stretch funded hours across 50 weeks of the year. This means you receive a maximum of 11.4 hours per week for the 15 hours scheme, or 22.8 hours per week for the 30 hours scheme.

If you require any additional hours over and above the funded entitlement these will be charged at our standard rate (please refer to the standard childcare fees listed on page 1).

The remaining two non-funded weeks of the year will be charged at our standard rate, (please refer to the table above) and will be applied between 1st-7th April, and 25th-31st December.

### Busy Bees One

For every funded session, we ask parents to contribute towards our NHS Startwell-accredited meals and all consumables such as nappies, wipes and sun cream (where applicable), as these are not covered by the funding we receive. To keep things simple, we include these charges in our Busy Bees One package, providing an all-inclusive rate for added convenience. Costs are applied according to the session attended.

To secure a fully funded place, a £100 refundable deposit is payable\*. Your deposit will be credited to the first invoice issued to you following your child's start date.

Please note: To remain eligible for the 30 hours scheme, parents must reconfirm their eligibility with HMRC every 3 months, or when prompted.

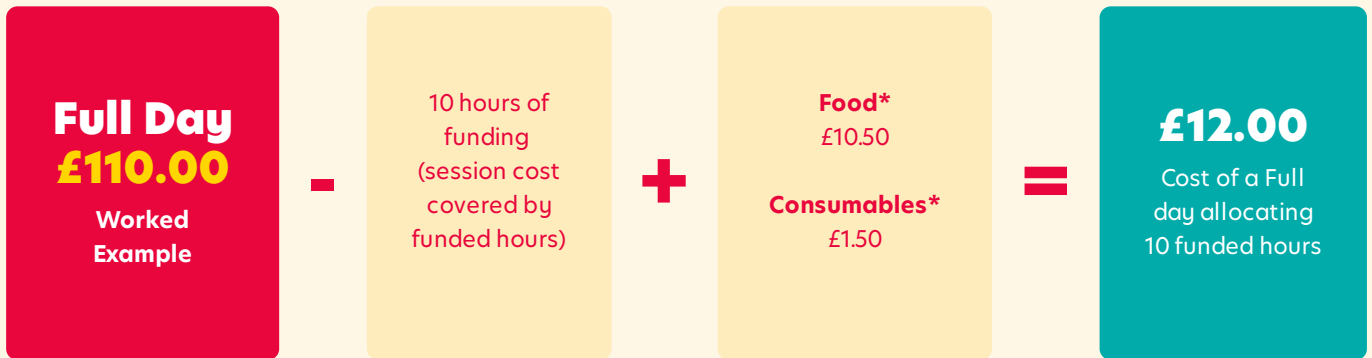
Visit our [website](#) to read our Fees and Funding Explained - A quick guide to childcare costs.

\*This charge is waived for funded 2-year-olds accessing funding under the 15 hour local authority scheme.

## Your Funded Fees explained

You can access up to 22.8 funded hours per week (1140 hours per year) or 11.4 funded hours per week (570 hours per year), available in 5 or 10 hour sessions. This leaves an additional 2.8 or 1.4 hours per week which you have the option to use as part of your permanent booking pattern to suit individual needs.

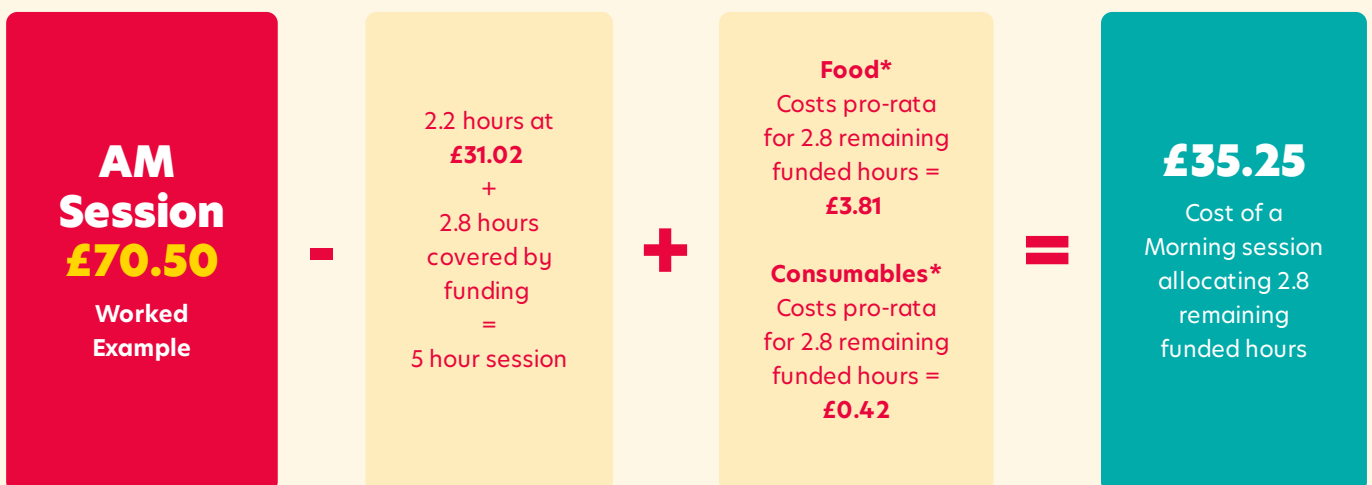
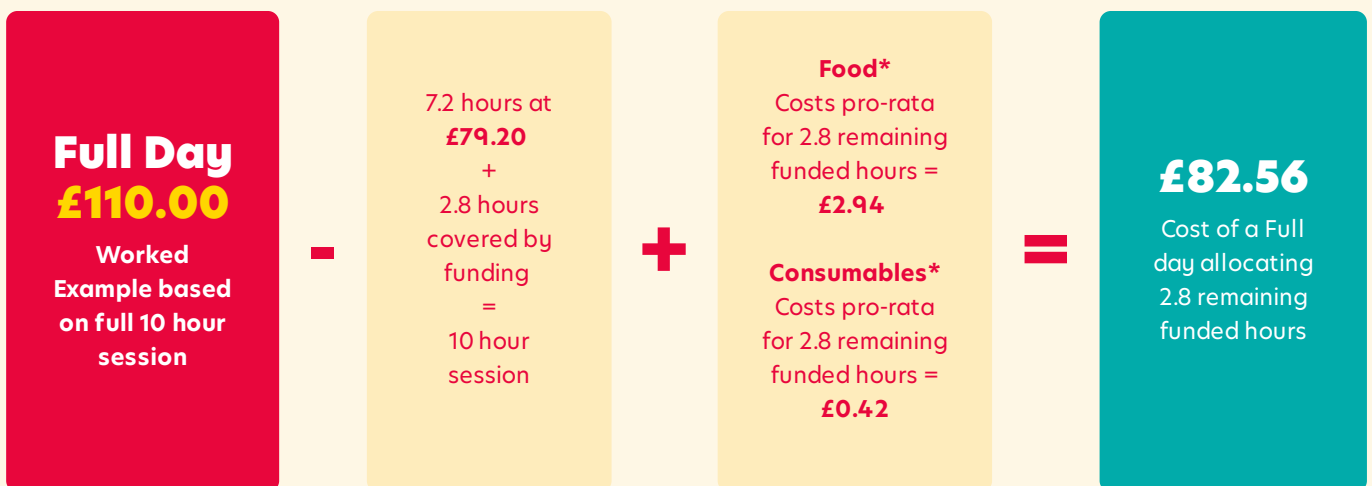
### Understanding how your full day funded session costs are calculated



If you are eligible for 30 hours (22.8 hours stretched equivalent) you would receive 2 x 10 hour sessions per week, or if you are eligible for 15 hours funding (11.4 hours stretched equivalent) you would receive 1 x 10 hour session per week.

### Understanding how your partially funded session costs are calculated

You then have the option to use your remaining funded hours if you need them as part of a longer session or standalone session.



\*Food and consumables charges are optional, please talk to your Centre Director who can provide tailored information to meet your individual circumstances.